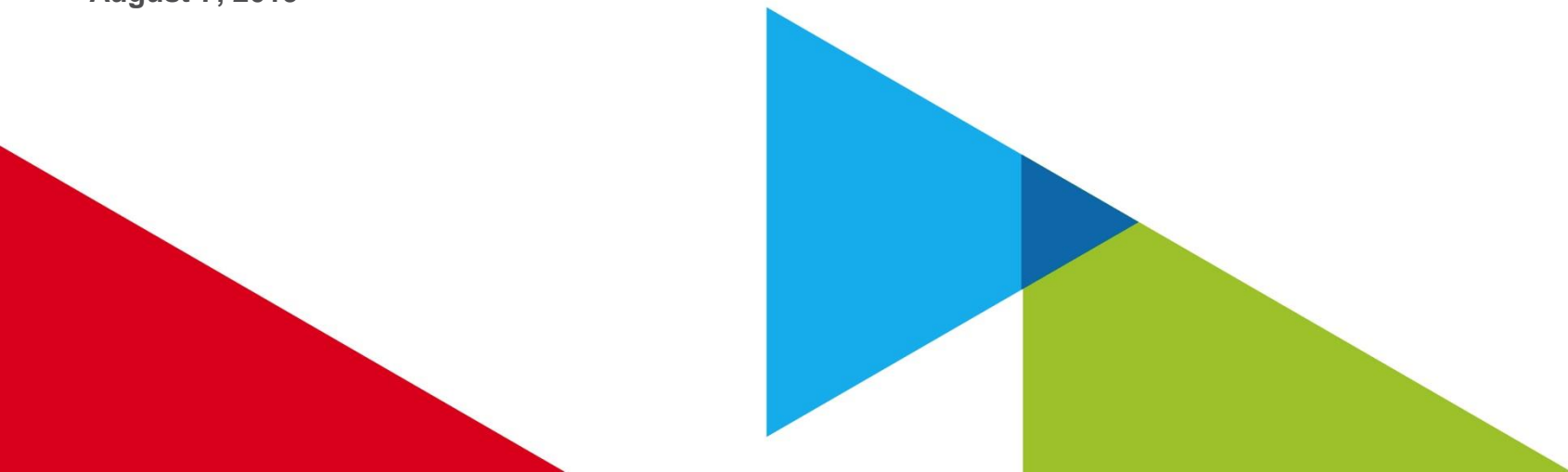




Tracking Savings for Behavior Programs

Presented to: Illinois EE Stakeholder Advisory Group

August 7, 2019



The Issue

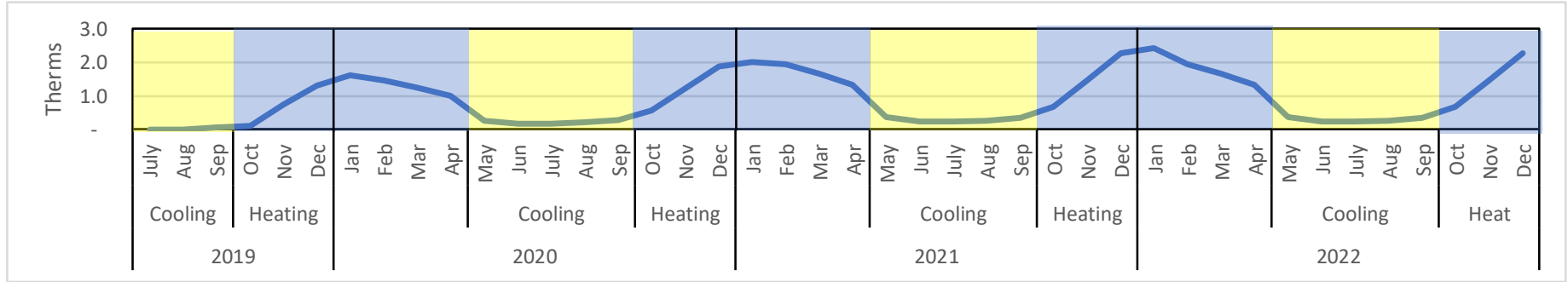


- **Nicor is implementing a new behavior program.**
 - Launching in summer of 2019.
 - Will run through end of current plan in 2021, and hopefully beyond.
 - Savings are dominated by heating usage and savings opportunities.
- **How to track savings?**
 - Calculate savings for the heating season, or calendar year?
 - Assign savings in the year starting the heating season or ending it?

Savings Profile: Behavior



Savings Per Household (Before Persistence Adjustment)



Savings Convention: Furnaces



Savings Per Household

Install Month	Annual Savings	Savings Convention	2019												2020												2021							
			Jan	Feb	Mar	Apr	May	Jun	Jul	Aug	Sep	Oct	Nov	Dec	Jan	Feb	Mar	Apr	May	Jun	Jul	Aug	Sep	Oct	Nov	Dec	Jan	Feb	Mar	Apr				
Furnace																																		
Jan	220	220	40	32	28	22	6	4	4	4	6	11	24	38																				
Feb	180	220		32	28	22	6	4	4	4	6	11	24	38	40																			
Mar	147	220			28	22	6	4	4	4	6	11	24	38	40	32																		
Apr	120	220				22	6	4	4	4	6	11	24	38	40	32	28																	
May	97	220					6	4	4	4	6	11	24	38	40	32	28	22																
Jun	91	220						4	4	4	6	11	24	38	40	32	28	22	6															
Jul	87	220							4	4	6	11	24	38	40	32	28	22	6	4														
Aug	83	220								4	6	11	24	38	40	32	28	22	6	4	4													
Sep	79	220									6	11	24	38	40	32	28	22	6	4	4	4												
Oct	73	220										11	24	38	40	32	28	22	6	4	4	4	6											
Nov	62	220											24	38	40	32	28	22	6	4	4	4	6	11										
Dec	38	220												38	40	32	28	22	6	4	4	4	6	11	24									

Savings Convention: Behavior



Savings Per Household

Install Month	Annual Savings	Savings Convention	2019												2020												2021			
			Jan	Feb	Mar	Apr	May	Jun	Jul	Aug	Sep	Oct	Nov	Dec	Jan	Feb	Mar	Apr	May	Jun	Jul	Aug	Sep	Oct	Nov	Dec	Jan	Feb	Mar	Apr
Furnace																														
Jan	220	220	40	32	28	22	6	4	4	4	6	11	24	38																
Feb	180	220		32	28	22	6	4	4	4	6	11	24	38	40															
Mar	147	220			28	22	6	4	4	4	6	11	24	38	40	32														
Apr	120	220				22	6	4	4	4	6	11	24	38	40	32	28													
May	97	220					6	4	4	4	6	11	24	38	40	32	28	22												
Jun	91	220						4	4	4	6	11	24	38	40	32	28	22	6											
Jul	87	220							4	4	6	11	24	38	40	32	28	22	6	4										
Aug	83	220								4	6	11	24	38	40	32	28	22	6	4	4									
Sep	79	220									6	11	24	38	40	32	28	22	6	4	4	4								
Oct	73	220										11	24	38	40	32	28	22	6	4	4	4	6							
Nov	62	220											24	38	40	32	28	22	6	4	4	4	6	11						
Dec	38	220												38	40	32	28	22	6	4	4	4	6	11	24					
Behavior																														
July 19	2.2	7.5																												
May 20	4.8	11.8																												

Nicor Proposal



- **Count savings for a full heating season.**
 - Savings are dominated by heating usage and savings opportunities.
 - Calendar year savings are not helpful for understanding program dynamics.
- **Track savings in the calendar year the heating season starts.**
 - Consistent with EE conventions used for all other measures.
 - Program costs occur predominantly year the heating season starts.
 - Consistent with assumptions used in approved Nicor EEP and stipulation.